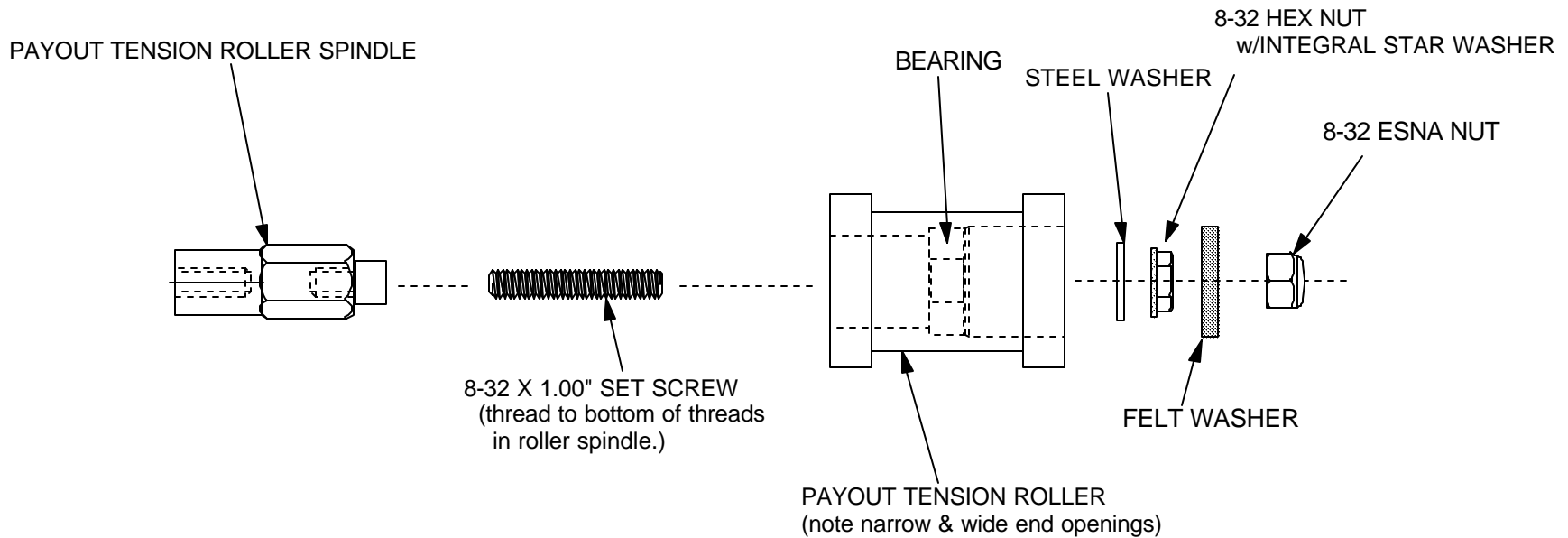


PAYOUT TENSION ROLLER ASSEMBLY



(ASSEMBLY NOTE: WHEN TIGHTNING RETAINING NUTS, MUST BE TIGHT. ROLLER MUST SPIN, WHILE HAVING DRAG CAUSED BY FELT WASHER RUBBING ON INSIDE OF ROLLER.)

11/13/00 REV A: NEW HARDWARE & ORDER

Big Sky Industries

908-454-6344

Tolerances	Project PLATTER PAY-OUT HEAD		
XX=+/- .015 XXX=+/- .005	Title PAY-OUT TENSION ROLLER ASSY.		
Date	Dwg.# PPOTR-ASSY-A		
8/30/00	Scale N.T.S.	Drawn By D.R.	Approved